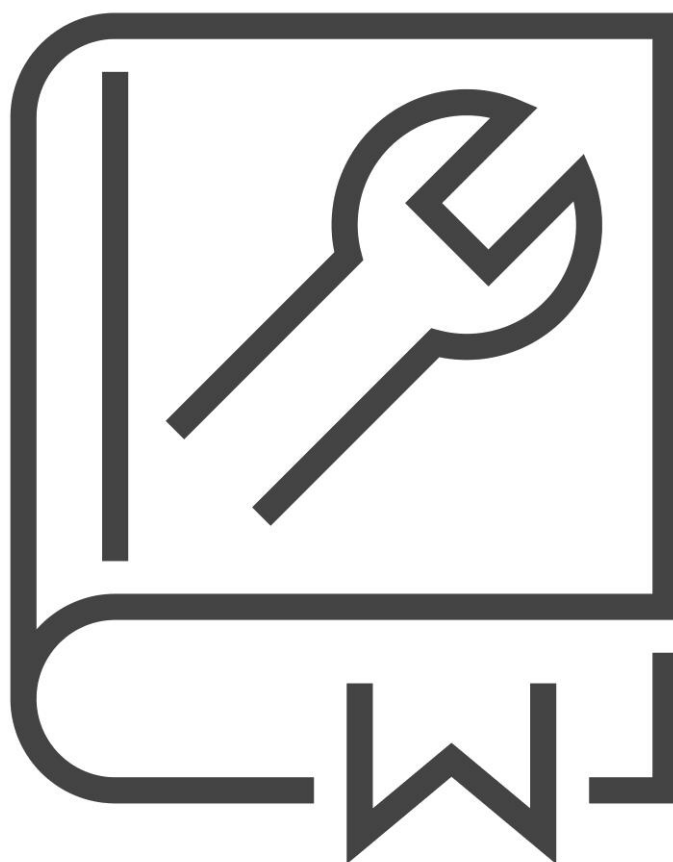




*We are aluminium*

# Installation manual antivibration set base plates



## Introduction

The purpose of this installation manual is to provide instructions so that installers and service operatives can competently and safely install the antivibration set on the base plates from Hydro. The antivibration set is an accessory for Hydro base plates.

Installers and service operatives must have the required competencies, knowledge and experience to safely work on equipment and operate mechanical tooling needed for the installation of the antivibration set.



### **ATTENTION:**

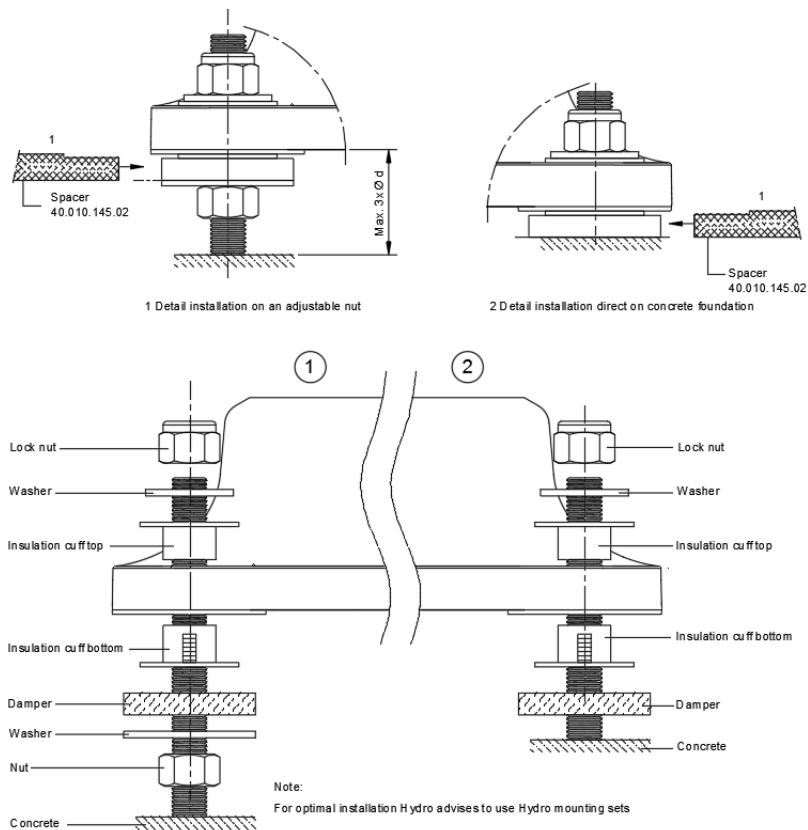
- Read this manual carefully before installing the antivibration set.
- Always follow the instructions.
- Always wear personal protection equipment; helmet, boots, gloves and safety glasses.
- The vibration damper set will have the best damping performance, if the set is installed carefully.

### Disclaimer

Despite the careful development and compilation of this installation manual, it is possible that incorrect or incomplete information is included. Hydro is not liable for any damage, directly or indirectly, related to the use of the information in this manual.

## Installation instructions antivibration set 1-part base plate

Use table 1 (see page 4) as guidance to determine the minimal length of the anchors.



### Installation on adjustable nut

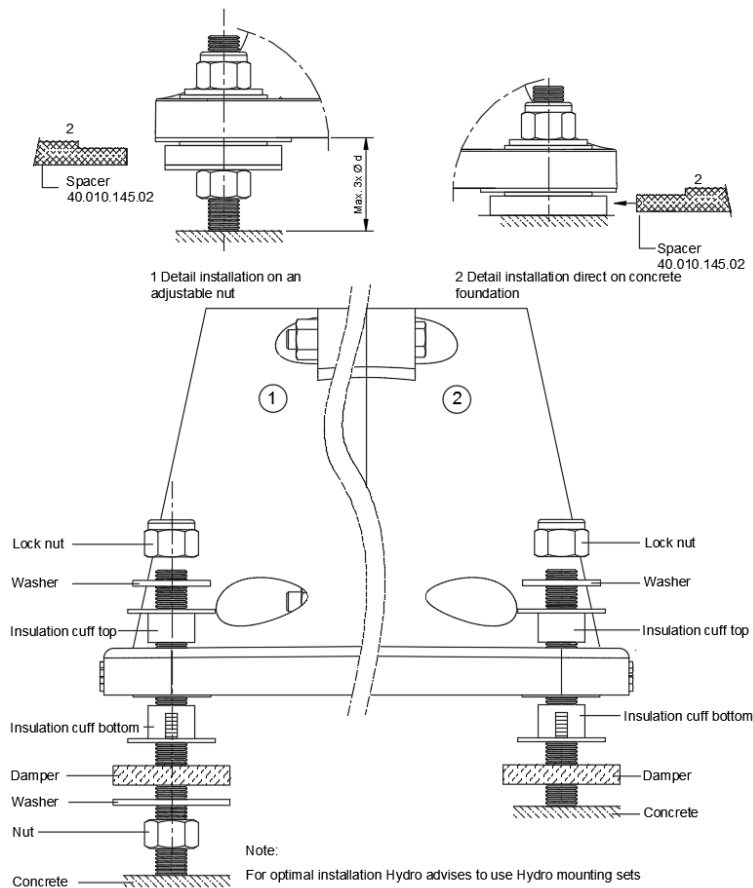
1. Screw a hexagonal nut on the anchor
2. Place the large washer (Hydro) on top of the nut
3. Place one damper (Hydro)
4. Repeat step 1-3 for each anchor
5. Place the Hydro base plate on the dampers
6. Put the washers on the anchors
7. Screw the lock nuts to just above the base plate
8. Put the spacer (Hydro) between the base plate and the large nut, for 1,5 mm compression of the damper
9. Tighten the lock nut, until the spacer clamps
10. Repeat steps 8 and 9 for all anchors

### Installation direct on concrete foundation

1. Place one damper (Hydro)
2. Repeat step 1 for each anchor
3. Place the Hydro base plate on the dampers
4. Put the washers on the anchors
5. Screw the lock nuts to just above the base plate
6. Put the spacer (Hydro) between the base plate and the large nut, for 1,5 mm compression of the damper
7. Tighten the lock nut, until the spacer clamps
8. Repeat steps 6 and 7 for all anchors

## Installation instructions antivibration set 2-part base plate

Use table 1 (see page 4) as guidance to determine the minimal length of the anchors.



### Installation on adjustable nut

1. Screw a hexagonal nut on the anchor
2. Place the large washer (Hydro) on top of the nut
3. Place one damper (Hydro)
4. Repeat step 1-3 for each anchor
5. Place the Hydro base plate on the dampers
6. Put the washers on the anchors
7. Screw the lock nuts to just above the base plate
8. Put the spacer (Hydro) between the base plate and the large nut, for 1,5 mm compression of the damper
9. Tighten the lock nut, until the spacer clamps
10. Repeat steps 8 and 9 for all anchors

### Installation direct on concrete foundation

1. Place one damper (Hydro)
2. Repeat step 1 for each anchor
3. Place the Hydro base plate on the dampers
4. Put the washers on the anchors
5. Screw the lock nuts to just above the base plate
6. Put the spacer (Hydro) between the base plate and the large nut, for 1,5 mm compression of the damper
7. Tighten the lock nut, until the spacer clamps
8. Repeat steps 6 and 7 for all anchors

**Minimal length of thread/anchors (above ground):**

Base plate	D114 - D145				D145		D165		D175		D200	
Pitch	200x200				300x300		300x300		300x300		300x300	
Thread size	M12	M14	M16	M18	M20	M24	M20	M24	M20	M24	M20	M24
Min. length of thread [mm] (1.)	100	105	120	130	140	170	140	170	140	170	140	170
Min. length of thread [mm] (2.)	60	65	70	75	85	95	85	95	85	95	85	95

Table 1: minimal length of thread/anchors. (With the advised thread size for each size base plate)

**Lifetime of the vibration damper set**

Rubberdesign claims that the EPDM dampers have a lifetime of at least 5-10 years.

Rubberdesign advise inspection of the antivibration set each year:

- Visual inspection:
  - Cracks due to dry out of the material
  - Swelling of the rubber
- Tighten the locknuts  
Tightening is needed because of the creep of EPDM, however this effect is very low.

**Pole Products**

Hydro Extrusion Drunen BV  
P.O. Box 75  
5150 AB Drunen  
The Netherlands

**Visiting address:**  
Alcoalaan 12  
5151 RW Drunen  
The Netherlands

[www.hydroextrusions.com/poles](http://www.hydroextrusions.com/poles)  
E: info.poleproducts.nl@hydro.com  
T: +31 416 386 200

**Registration No.**  
No. 17205924